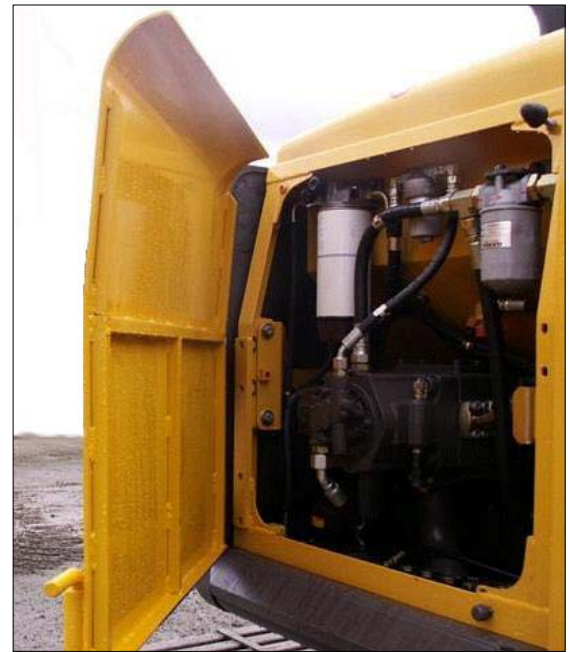


Excavator Heavy Duty Rear Doors



Replace your weak or damaged factory doors with HNL Design's HD Rear Doors. Heavy duty doors help reduce damage to internal components such as pumps, motors and valves.



Our rear doors are built from formed steel plate for long life and durability and are reinforced with an internal tube frame. Our design ensures appropriate venting to allow for adequate machine cooling.

Series	80	120	150	200	250	300	400
Door Thickness	1/4"	1/4"	1/4"	1/4"	5/16"	5/16"	5/16"

- Includes HNL heavy duty hinges
- Use with factory keyed latches or HNL heavy duty manual latches
- Primer coated and shipped for customer to install

**Specifications subject to change without notice.*

***Machine or guarding items may require minor alterations during install.*